

Michaelmas Fair 2017

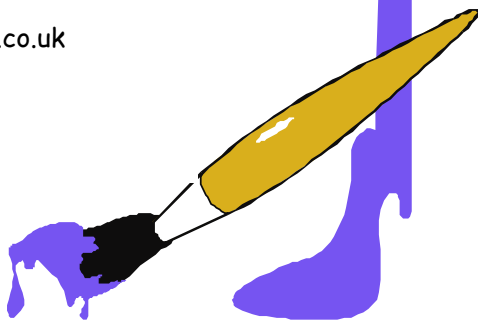
Show Details and Schedule

Schedule of Classes:-

Creative Arts - Section 1	24
Cakes & Preserves - Section 2	26
Floral Arrangements - Section 3	27
Flowers - Section 4	27
Fruit - Section 5	29
Vegetables - Section 6	29
Rules of the Show	30
Show Information	31
Open Classes	32
Honey - Section 7	32
Photography - Section 8	33
Children - Section 9	34
Green - Section 10	35
Winemaking & Homebrewing - Section 11	35
Trophies & 2016 winners	36

ALL ENQUIRIES TO THE SHOW ORGANISER:-

Raechel Bentley
E-mail: raechel@live.co.uk
Tel: 07811 144967



SCHEDULE of CLASSES

SECTION ONE - CREATIVE ARTS

1. A hand-knitted article (**this item is open to all-comers** and is not restricted to residents of the parish of Winscombe & Sandford)
2. An item of crochet work or embroidery
3. An item of patchwork or quilting (item to be labelled as 'made from kit' or 'original design') (**this item is open to all-comers** and is not restricted to residents of the parish of Winscombe and Sandford)
4. Canvas stitching work (original work)
5. Canvas work (counted cross stitch and kits)
6. Soft craft item e.g. toy, lampshade, weaving, cushion etc (items should be in a new condition and labelled as 'made from kit' or 'original design')
7. Home-made adult or children's item of clothing on a Wild West theme (item to be labelled as 'made from kit' or 'original')
8. Hard craft item - e.g. glass, metal, model etc (item to be labelled as 'made from kit' or 'original design')
9. Make a decoupage craft item, e.g. upcycle a small mirror
10. An item of ceramics/pottery (item to be labelled as 'made from kit' or 'original design')
11. Make a child's apron using any fabric (item to be labelled as 'made from kit' or 'original design')
12. Make a minimum 2 metre length bunting
13. Make a woven container
14. A painting (oil, acrylic or pastel)
15. A painting (watercolour)
16. A mixed media item
17. A drawing - any media
18. An item of calligraphy (**this item is open to all-comers** and is not restricted to residents of the parish of Winscombe and Sandford)
19. An original piece of poetry (to be on A4 paper) - Themed class on 'The Wild West' **
20. An original piece of poetry (to be on A4 paper) - **Open class****
21. A short story, or descriptive piece, on 'It's not what you think' with a maximum of 1000 words**

** N.B. Classes 19, 20 and 21 (Creative writing classes) - we would like to display copies of poetry and stories in a folder in the Library or Community Centre Book Room after the Fair, therefore, we would appreciate it if you could provide us with an extra copy of your work.

JUNIOR CLASSES (AGES UP TO 16 YEARS)

22. A painting using any media (this item is open to all children aged 11-16 and is not restricted to residents of the parish of Winscombe and Sandford) **NOTE: exhibits from children under 11 should be made in the Children's section**
23. A hand-made soft craft item - e.g. toy, knitted item, patchwork, sewn article etc (items to be in a new condition and labelled as 'made from kit' or 'original design')
24. Draw and paint or colour a cow boy or girl on A4 paper
25. An hard craft item - e.g. made from wood/metal (item to be labelled as 'made from kit' or 'original design')
26. Design then paint or colour a magical creature on A4 paper
27. Make a space related item using Lego **NOT** from a kit (e.g. space ship, planets, a space chicken!)
28. Make a 3D model (no larger than a shoe box) e.g. a monster, building or vehicle
29. Make a super bling smart phone case using a blank case and flat back gems, beads etc
30. Handwriting - write the poem below on A4 paper please, **to be judged on handwriting**, may be decorated

Birds, Bags, Bears and Buns

The common cormorant or shag
Lays eggs inside a paper bag
The reason you will see, no doubt,
It is to keep the lightning out,
But what these unobservant birds
Have never noticed is that herds
Of wandering bears may come with buns
And steal the bags to hold the crumbs.

Anonymous

31. A poem, haiku, riddle/joke (to be on A4 paper) **
32. A short story on any topic - maximum length 1000 words (to be on A4 paper) **

** N.B. Items 31 and 32 (Creative writing classes) - We would like to display copies of poetry and stories in a folder in the Library or Community Centre Book Room after the Fair, therefore, we would appreciate it if you could provide us with an extra copy of your work.

SECTION TWO - CAKES & PRESERVES

All cakes must be displayed on paper doyleys only — no plates.

Preserves are to be labelled to show content and date made.

Screw-top jars without waxed paper discs or cellophane tops with waxed paper discs will be allowed. Jars are to be filled to the top.

33. **Victoria Sandwich** (recipe below) **No additional ingredients to be used**
2 x 18cm (7") round tins, jam filling only, top to be left plain
175g (6oz) self raising flour 175g (6oz) margarine
175g (6oz) caster sugar 3 eggs
34. **Victoria Sandwich — men only** (recipe as above)
35. **Easy Fruit Cake** (recipe below)
100g (4oz) sugar 225g (8oz) self raising flour
100g (4oz) margarine 1 beaten egg
350g (12oz) mixed fruit 150ml (¹/₄) pint water

Method: Place fruit, sugar, margarine and water in a pan, simmer slowly with lid on for 20 minutes. Allow to cool. Add beaten egg and stir in flour. Pour into a greased 18cm (7") tin. Bake for 90 minutes at 300°F/150°C or Gas 2.

36. **Cherry & Coconut Loaf** (recipe below)
250g (8oz) plain flour 150g (5oz) glace cherries
175g (6oz) butter softened 60g (2oz) desiccated coconut
175g (6oz) caster sugar
3 medium eggs beaten 1kg (2lb) loaf tin buttered & lined
2 tbs milk Oven 350°F/180°C or Gas 4

Method: Sift flour into bowl. Add butter, sugar, eggs and milk and beat until smooth. Cut cherries in half and fold into the mixture along with the desiccated coconut. Spoon into the loaf tin and level the surface. Bake the loaf in the centre of the oven for 45 mins to 1 hour, or until the cake has risen and feels firm to the touch and a skewer comes out clean after being entered into the centre.

37. **Lemon Drizzle Cake** (your choice)
38. **Gluten Free Carrot Cake** (your favourite)
39. Swiss roll with jam
40. 6 Chocolate Brownies
41. 6 Fruit Scones
42. 6 Cheese Scones
43. Loaf of Bread - machine made - white, brown or granary
44. Jar of Jelly - type to be labelled and dated
45. Jar of Jam - type to be labelled and dated
46. Jar of Marmalade - type to be labelled and dated
47. Jar of lemon curd—to be labelled and dated
48. Jar of Chutney - type to be labelled and dated and should be at least two months old



JUNIOR CLASSES (AGES up to 12 years and 12-16 YEARS)

All cakes must be displayed on paper doyleys or paper plates

49. Small decorated Halloween pizza
50. Five cup cakes—to look like insects (judged on decoration only)
51. Decorated sponge—with an animal face (judged on decoration only)
52. Five Chocolate Chip Cookies (recipe below)

85g (3oz) butter	85g (3oz) granulated sugar
1 egg	85g (3oz) brown sugar
175g (6oz) self-raising flour	1 pkt chocolate drops (milk or plain)

Method: Cream butter and sugar. Beat in eggs. Stir in flour and the chocolate drops. Mix well and place in teaspoonfuls on greased baking sheet. Bake until golden brown (approx 12-15 minutes) 190°C/370°F/Gas 5.

SECTION THREE - FLORAL ARRANGEMENTS

Space allowed: 50cm wide x 50cm deep except where specified, height unlimited. No artificial plant material may be used in any class unless specified. An 'exhibit' is an arrangement with or without accessories. Bases and drapes are allowed in all classes. Garden or florist flowers and materials may be used in arrangements unless specified.

53. 'Village Life' an arrangement celebrating village life
54. 'Afternoon Tea' an arrangement using plants and any other materials
55. 'In the Garden' an arrangement celebrating the seasons
56. 'A Country Walk' an arrangement using foliage and berries
57. 'Little Gems' a miniature arrangement in a small container (maximum diameter 15cm)

JUNIOR CLASSES (AGES UP TO 16 YEARS)

58. An arrangement in a cup and saucer
59. 'Fantasy World' an arrangement themed on a book or film (title to be stated)



SECTION FOUR - FLOWERS

60. Vase of dahlias, small cactus (diameter 115 – 170mm) - 3 blooms
61. Large cactus dahlia (diameter 220 - 260mm) - 1 bloom
62. Vase of dahlias, miniature decorative (diameter less than 115mm) - 3 blooms
63. Vase of dahlias, pompon - 3 blooms
64. Vase of dahlias, not conforming to classes 60 - 63 - 3 blooms
65. One dahlia bloom (diameter less than 220mm)
66. One dahlia bloom - any other variety not otherwise listed in this schedule
67. Vase of single asters - 3 blooms
68. Vase of double asters - 3 blooms

SECTION FOUR - FLOWERS (Continued)

69. Vase of marigolds, any varieties - 5 blooms
70. Vase of sweet peas - 6 stems
71. Vase of chrysanthemums - 3 blooms, decorative, any colours
72. Vase of spray chrysanthemums - 3 stems
73. Single chrysanthemum bloom - any variety
74. Vase of antirrhinums - 3 stems
75. Pot of pelargonium
76. Pot of fuchsia
77. Pot of flowering begonia
78. Pot of foliage begonia
79. Foliage pot plant - not begonia
80. A cactus - in a pot
81. A succulent - in a pot
82. Pot of fern
83. Any other flowering pot plant
84. Six stems of garden flowers - all different
85. Three stems of hybrid T roses
86. Three stems of rose of a single variety, one stem in bud, one partially open, one fully open
87. Three stems of floribunda roses
88. A specimen hybrid T rose
89. Six stems of any single variety of flower not otherwise listed in this schedule
90. Three spikes of gladioli, any colours
91. Six pansy flowers, any colours (displayed on a 225mm board with punched holes, supplied by Winscombe Horticultural Society)
92. Six fuchsia flowers of one or more varieties (displayed on a 225mm board with punched holes, supplied by Winscombe Horticultural Society)
93. A planted container not exceeding 450mm diameter
94. Largest sunflower head (diameter) without stem
95. A Bonsai tree
96. A plant grown from a fruit pip or stone

JUNIOR CLASSES (AGES UP TO 16 YEARS)

97. My best pot plant
98. A vase of at least three mixed garden flowers
99. A collection of herbs in a vase
100. Primary School Plant (see note below)



Winscombe and Sandford Primary Schools Competition Pupils at both schools were given a plug plant to grow, courtesy of Mr & Mrs Dewberry. The best plant from each school year will be acknowledged by a certificate of merit. The pupil who grows the best plant exhibit of all will receive the Dewberry Shield Trophy. **NB pupils should enter in their Year Group at the time of the Michaelmas Fair.**

SECTION FIVE - FRUIT

- 101. Five dessert apples
- 102. Five cooking apples
- 103. Nine dessert plums
- 104. Five dessert pears
- 105. Bunch of grapes - any variety
- 106. Dish of any other fruit - any variety
- 107. Three heaviest apples - any variety

SECTION SIX - VEGETABLES

Note: Vegetables should be this year's growth only

- 108. Potatoes, 3 white, round or kidney
- 109. Potatoes, 3 coloured, round or kidney
- 110. Potatoes, 3 heaviest, any variety
- 111. Carrots, 3 stump-rooted, with not more than 100mm of foliage
- 112. Carrots, 3 long, with not more than 100mm of foliage
- 113. Onions, 5 from sets, trimmed
- 114. Onions, 5 from seed, trimmed
- 115. Onions, 6 culinary, trimmed to pass through 75mm circle
- 116. Heaviest onion (untrimmed)
- 117. Beetroot, 3 round, foliage trimmed
- 118. Three courgettes - 200mm maximum
- 119. Five tomatoes (not cherry)
- 120. Truss of cherry tomatoes (small varieties e.g. Gardener's Delight)
- 121. Six runner beans
- 122. Three parsnips, foliage lightly trimmed
- 123. Six shallots, large
- 124. Six shallots, pickling - to pass through a 25mm ring
- 125. Three leeks, tops to be tied
- 126. Two lettuce with roots
- 127. Two cauliflowers, with at least 100mm stem
- 128. Pair of marrows, not to exceed 300mm in length
- 129. A cucumber, frame or glasshouse
- 130. A ridge cucumber
- 131. Dish of 6 pods of peas
- 132. Collection of at least 5 varieties of herbs you have grown - may be picked or growing
- 133. Sweet corn, 2 cobs
- 134. Any other vegetable not listed elsewhere
- 135. Heaviest marrow
- 136. Longest green runner bean
- 137. Heaviest pumpkin



JUNIOR CLASSES (AGES UP TO 16 YEARS)

- 138. The best vegetable you have grown
- 139. Animal made from vegetables and/or fruit



Rules of the Show

PLEASE READ THESE RULES CAREFULLY BEFORE FILLING IN YOUR ENTRY FORM

1. Except for classes in Sections 4, 5 & 6, which are also open to Members of the Winscombe & Sandford Horticultural Society, or where otherwise stated in the Schedule, exhibitors must be amateurs and residents of the Parish of Winscombe & Sandford.
2. Exhibits must be the bona fide production of the exhibitor and free of all labelling, except where stated. Children and Junior exhibits must be their own, unassisted work and must NOT be labelled with name or age.
3. A family trophy will be awarded to the family which gains the highest average number of points. A family will consist of a minimum of 3 exhibitors within a household including at least one adult and one child of 16 years or under.
4. Entries must be on an official entry form, one per person, with name, address and telephone number clearly shown. Also include your email address if you have one. Extra forms can be obtained from the Library, the Post Office or Litster's Butchers.
5. Entry forms must be submitted to the address shown on the entry form by 8pm on Wednesday 6th September. Sections 1 - 6, 8 & 10, not more than 2 entries per class except where otherwise stated. Sections 7 (Honey) and 9 (Children) 1 entry ONLY per class.
6. Exhibitors must provide their own containers and receptacles for display (except classes 91 & 92).
7. On the day of the Show, the Community Centre will be open from 7.30am and the Nursery School Annex from 8.30am. **All exhibits must be staged by 10am. Exhibitors must collect place tickets from the Entry Secretary who will be located by the Main Entrance.**
8. Judging will take place between 10.15am and 12.00pm during which time no unauthorised persons will be allowed into the exhibition.
9. All judges are from outside the parish. The judges' decisions will be final.
10. Exhibits must remain staged until 4.30pm.
11. Every possible care will be taken of exhibits but the Community Association will not be responsible for any loss or damage that may occur.
12. Exhibits remain the property of the exhibitor but the Association is grateful to those who kindly donate exhibits to be sold after the Show. Items not being donated must be removed by 4.45pm. Please do NOT remove any exhibit before 4.30pm. Those remaining will be sold.
13. Holders of trophies will be responsible for their safe keeping while in their possession and for returning them to the Trophy Secretary as requested.



Show Information

THE SHOW IS OPEN TO QUALIFYING AMATEURS OF ALL AGES AND COMPRISES ELEVEN COMPETITIVE SECTIONS, EACH WITH SEVERAL CLASSES.

ENTRIES MUST BE ON THE OFFICIAL ENTRY FORM, ONE PER PERSON. DETAILS OF HOW TO ENTER WILL BE FOUND IN THE 'RULES OF THE SHOW' ON THE OPPOSITE PAGE.

PLEASE READ THESE CAREFULLY BEFORE FILLING IN YOUR ENTRY FORM AND SUBMITTING IT TO:

Mike Thresher
16 Homestead Way
Winscombe BS25 1HL
Telephone 01934 843030

Entries must be received by 8pm on WEDNESDAY 6th September 2017 at the very latest

Any queries over classes should be referred to the relevant Section Organiser (details on page 38).

Awards:

CERTIFICATES - 1st, 2nd, 3rd and Highly Commended Certificates will be awarded at the discretion of the judges.

POINTS - will be awarded as follows:

- 1st place - 8 points
- 2nd place - 5 points
- 3rd place - 3 points
- Highly Commended - 1 point

TROPHIES - Please see page 36

A family trophy will be awarded to the family which gains the highest average number of points. A family will consist of a minimum of 3 exhibitors within a household including at least one adult and one child of 16 years or under.

OPEN CLASSES A - F

These classes are unrestricted and open to all-comers.

Prizes will be awarded as follows:

1st prize - £5; 2nd prize - £3; 3rd prize - £1

- A. Vase of dahlias, large decorative (diameter more than 220mm) - 3 blooms
- B. Vase of chrysanthemums - 3 blooms, incurved, any colour/s
- C. Six blooms of any variety, excluding dahlias and chrysanthemums
- D. A collection of vegetables, any 5 kinds (maximum 750mm x 750mm space allowed)
- E. A collection of salad vegetables, at least 5 kinds, in a container not exceeding 450mm x 375mm
- F. A bowl of mixed fruit, at least three varieties in a bowl not exceeding 375mm in diameter

SECTION SEVEN - HONEY - Open Classes

- a. Exhibitors are limited to one entry in each class
- b. Honey and wax must be from the exhibitor's apiary except the cake and biscuits classes.
- c. Jars must be BS standard 454g pattern with gold lacquered lids and show labels affixed 2cm from base.
- d. The honey show steward will advise on where exhibit labels are to be affixed on classes other than jars.
- e. BBKA Show Rules (1994) apply

- 140. Two 454g(1lb) jars liquid honey (Light, Medium or Dark)
- 141. Two 454g(1lb) jars set honey (Creamed or Naturally Crystallised)
- 142. One standard 8 oz container of cut-comb minimum gross weight 200g
- 143. One shallow comb of honey suitable for extracting. Presented in a frame show case glazed on both sides
- 144. One honey cake made to the show recipe below. The cake is to be displayed on a plain white paper plate in a clear polythene bag.
200g(7oz) self-raising flour 2 medium sized eggs
175g(6oz) liquid honey 110g(4oz) soft brown sugar
140g(5oz) butter 1 tablespoon of water

Method: Place butter, sugar, honey and water in a saucepan and heat until butter has melted, stirring all the time. When the butter has melted, remove pan from the heat and allow contents to cool to blood temperature. Gradually beat in the eggs, add sieved flour, mix until smooth (do not over mix). Turn into a greased and lined 16cm-19cm (6 $\frac{1}{2}$ -7 $\frac{1}{2}$ ") diameter cake tin. Preheat the oven to 180°C/350°F or Gas mark 4. Bake for 1 hour, or until risen and firm to the touch. Cover the top, if necessary, to prevent browning too much. Leave to cool in the tin for 5 minutes and then turn out onto a wire rack until cool. Cooking time and temperature may vary to suit the type of oven used so have a trial run before the competition day.

- 145. Six pieces of honey shortbread biscuits made to the recipe below. Biscuits should be displayed on a plain white paper plate in a clear polythene bag.
225g(8oz) butter 50g(2oz) honey
400g(14oz) plain flour 50g(2oz) light soft brown sugar

Method: Cream butter and sugar together, add honey and gradually add sifted flour. Mix well together to form a soft dough. Roll out dough on a lightly floured surface and cut into rounds with scone cutter, prick surface with fork and put on large greased baking tray. Bake in preheated oven at 160°C/Gas 2 for approx 25 minutes or until biscuits are golden brown. When cooked, lift the biscuits off the tray and leave to cool on a wire rack.

SECTION SEVEN - HONEY - Open Classes Cont:

146. Ten pieces of honey fudge made to the recipe below. The pieces of fudge are to be displayed on a plain white paper plate in a clear polythene bag.

454g/1lb granulated sugar
55g/2oz honey

55g/2oz butter
150ml/ 1/4 pint milk

Method: Put all the ingredients into a heavy based pan. Bring slowly to the boil, stirring all the time. Cover and boil rapidly for 2 minutes. Uncover and boil gently for approx 15 minutes until soft ball stage is reached, stirring all the time. (A little dropped into cold water will form a soft ball. Take off the heat, stand pan on a cold surface for 5 minutes. Beat until creamy and mix starts to thicken. Pour quickly into a greased/oiled tin approx 18cm (7") square. When nearly set, mark into squares. Cut when cold.

SECTION EIGHT - PHOTOGRAPHY

PLEASE READ THE SIZE REQUIREMENTS FOR PHOTOGRAPHS VERY CAREFULLY

Not more than TWO entries per class. **OPEN** classes are open to all comers. The other classes are confined to residents of Winscombe and Sandford parishes and trophies will only be awarded to parish residents. There are two sections for prints - adult and junior. Digital manipulation is permitted which remains faithful to the original image in all classes, apart from in class 167 where demonstration of digital/computer manipulation is required.

PRINTS: Except for class 162 (Black and white/monochrome photo) prints may be colour OR black and white/monochrome. All prints should not be bigger than A5 (150mm x 210mm or 5" x 7.5") in size apart from classes 147, 159, 160, 162, 164 & 167 ('as far as the eye can see', speed/motion, glass/metal, black and white/monochrome photograph, enlargement and computer manipulated classes) where the maximum size is A4 (210mm X 300mm or 8" X 12"). Entries for classes 156, 165 and 166 should be mounted on THIN CARD which can be pinned with drawing pins to display boards. Those for other classes should NOT be mounted.

147. **Open:** A photograph titled '**As far as the eye can see**'
148. A **city-scape**
149. A photograph of **water**
150. A **portrait of an animal**
151. **Open:** A photograph that captures **wildlife**
152. **Open:** A **portrait** (head and shoulders only)
153. A photograph that features **emotion**
154. **Open:** A **close-up**
155. **Make us laugh!** A humorous image (caption optional)
156. **Tell us a story** - a series of three photographs that tell a story - mounted on thin card
157. A photograph with the title '**nostalgia**'
158. A photograph of '**something nice**'
159. A photograph featuring **speed or motion**
160. A photograph featuring **glass or metal**
161. An image of a **sunset or sunrise**
162. A **black and white** or monochrome photograph
163. **Any other photograph** (that does not fit in any of the other classes)
164. An **enlargement** of any subject
165. **Open:** A mounted collection of five photographs on any subject but with the theme displayed. This is judged on photographic quality and presentation
166. A mounted collection of 5 photographs titled '**Structure**'. This is judged on photographic quality and presentation
167. A computer manipulated image with the theme '**Distortion**' with the original image displayed separately



SECTION EIGHT - PHOTOGRAPHY- Cont

JUNIOR CLASSES (AGES UP TO 16 YEARS)

Entries for classes 168 and 170 should be mounted on THIN CARD which can be pinned with drawing pins to display boards. Those for other classes should NOT be mounted.

168. 'Once upon a time...' - a series of up to 5 photographs that tell a story - mounted on thin card
169. A photograph that features an **animal**
170. A mounted collection of up to five photographs titled '**Patterns**'. This is judged on photographic quality and presentation. The winner will receive the Fisher Trophy.
171. Any other photograph (that does not fit in any of the other classes)

SECTION NINE - CHILDREN

Open to children resident in the Parish of Winscombe and Sandford or attending Winscombe or Sandford Primary and Nursery Schools. Children can submit one entry into each class (see Entry Form). A trophy will be awarded for the best exhibit in each group. CHILDREN'S OWN UNASSISTED WORK PLEASE. **Entries will be accepted in the Nursery Annex from 8.30am until 10.00am on the day.**

UNDER 3's

172. A finger, hand or foot print painting or drawing of your choice

3-4 YEARS

173. 4 iced biscuits (judged on decoration only)
174. Decorate a toilet roll centre to create an imaginary character
175. A painting or drawing of your own choice

5-6 YEARS

176. 4 iced biscuits (judged on decoration only)
177. Create an American Indian style head-dress, head band or crown
178. Decorate a hard-boiled egg
179. A painted or drawn self-portrait

7-8 YEARS

180. Create a stained "glass" window with coloured tissue paper and/or cellophane
181. Create and decorate a paper aeroplane
182. Make a bow and decorated quiver of arrows
183. Create a design, picture or pattern using vegetable printing
184. Build a castle using recycled materials

SECTION NINE - CHILDREN - Continued

9-11 YEARS

185. Create a dream-catcher
186. Create a miniature garden or allotment
187. Design, make and decorate a gift box using card and/or paper
188. Create a miniature wildlife habitat, woodland or jungle in a shoe box
189. Create your own Pokémon character and describe its special powers
190. A limerick or short poem on the theme of birds (CREATIVE WRITING)

GROWN-UP KIDS

191. Adults - have you enjoyed encouraging your own kids? Now it's your turn..... Any adult may enter ONE item (own work please!) based on any of the above children's classes (172 - 190)

SECTION TEN - GREEN

7-8 YEARS

192. Using recycled materials make a collage of the life of a cowboy in the wild would make

9-11 YEARS

193. Make a stringed instrument out of recycled materials

12-16 YEARS

194. Make some bunting out of recycled materials
195. Using recycled materials make a collage of a scene or scenery from the Wild West

ADULTS

196. Make a bag or purse out of an old pair of jeans
197. Using recycled materials make a collage of a scene or scenery from the Wild West

Two entries are permitted in each class. Trophies will be awarded for the most imaginative exhibit in each age group. **Any adhesives may be used.**

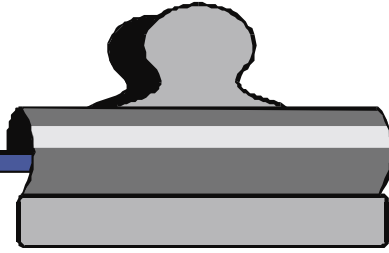
SECTION ELEVEN - WINEMAKING & HOMEBREWING

- ♦ Wine. Beer and Spirits should have been made by the exhibitor, by the process of fermentation and must not contain any added alcohol.
 - ♦ Bottles used should be of clear glass
 - ♦ Two entries may be made in any of the Wine/Homebrewing Classes
198. Red wine
 199. White wine
 200. Beer/Ale
 201. A spirit of your choice (label to indicate variety)
 202. A soft drink or cordial

2016 Trophy Winners

THE THOMAS CUP	Most points Section 1 - Creative Arts	Jackie Warren
THE ATKINS MEMORIAL ROSEBOWL	Best exhibit in Section 1 - Creative Arts: Senior classes	Linda Vandermark
THE RISK TROPHY	Best exhibit in Section 1 - Creative Arts: Senior painting/drawing	Rosemarie Aston
THE HEMBERY CUP	Best poem in Section 1 - Creative Arts: Senior classes	Paul Methven
THE RON PREECE MEMORIAL TROPHY	Best exhibit in Section 1 - Creative Arts: Junior classes	Emmie Griffith
THE WOODBOROUGH INN CUP	Most points in Section 1 - Creative Arts: Junior classes	Amelia Smith
THE PAUL DAVIS TROPHY	Most promising young artist drawing & painting	Isla McBride
THE PARKER CUP	Best Junior Poem	Rose Ormond
THE RAILWAY CUP	Best Junior Short Story	Rose Ormond
THE TRACY CUP	Most points in Section 2 - Cakes and Preserves: Senior classes	Jacquie Bravery
THE BRENCHLEY CUP	Most points in Section 2 - Cakes and Preserves: Junior classes	Harry Whittle
THE BAKE OFF TROPHY	Most points in Section 2 - Cakes and Preserves: excluding men	Jacquie Bravery
THE RUSHIN TROPHY	Best exhibit in Section 2 - Cakes and Preserves: men only	Tony Poole
THE RUSHIN CUP	Most points in Section 3 - Floral Arrangements	Bernice Jevons
THE FELTHAM TROPHY	Best exhibit in Section 3 - Floral Arrangements	Bernice Jevons
THE SAMPSON TROPHY	Best exhibit in Section 3 - Floral Arrangements: Junior classes	Amber Cooknell
THE GOWER CUP	Most points in Section 4 - Flowers	Bill Maggs
THE WEST CUP	Most points in Section 4 - Flowers: Dahlia classes	Graham Mizen
THE BOSTOCK MEMORIAL CUP	Most points in Section 4 - Flowers: Chrysanthemum classes	Bill Maggs
THE WHICHER TROPHY	Best flower exhibit in Section 4 - Flowers	Bill Maggs
THE ROY GATEHOUSE MEMORIAL TROPHY	Best pot plant exhibit in Section 4 - Flowers	Rose Kerr-Smiley
THE DEWBERRY SHIELD	Best geranium plant in school	Amelia Smith
THE DENNING CUP	Best bonsai exhibit	Lorna Nelson
THE LOCK CUP	Most points in Section 5 - Fruit	Siobhan Mullen
THE EDDIE BODY MEMORIAL TROPHY	Best exhibit in Section 5	Stephen Hembrey
THE NATWEST CUP	Most points in Section 6 - Vegetables	Ivor Marshall
THE WILKINSON TROPHY	Best exhibit in Section 6 - Vegetables	Bill Maggs
THE BILL GADD TROPHY	Best exhibit in Section 6 - Vegetables: Open class collection of vegetables	Bill Maggs
THE WINSCOMBE HORT. SOCIETY CHALLENGE CUP	Best exhibit in Sections 4, 5 and 6 - Flowers, Fruit and Vegetables (excluding Open Classes)	Anthony Wyatt
THE SCULL MEMORIAL ROSEBOWL	Most points in Sections 4, 5 and 6 - Flowers, Fruit and Vegetables	Bill Maggs
THE UFFINDELL CUP	Most points in Sections 4, 5 and 6 - Flowers, Fruit and Vegetables without another major trophy	Andrew Sweet
THE BRAMBLEWOOD TROPHY	Most points in Junior Sections 4 & 6 - Flower and Vegetable classes 97 - 100 and 138 and 139	Rose Kerr-Smiley

THE JOHN BRIGHT TROPHY	Best junior exhibit in Sections 4, 5 and 6 - Flowers, Fruit Vegetable classes 97-100 and 138 and 139	Sam Heath
THE HAZELL HONEY CUP	Most points in Section 7 - Honey	Belinda Kumpel
THE OVERTON CUP	Most points in Section 8 - Photography: Senior classes	Colin Williams
THE NATIONAL WESTMINSTER PHOTOGRAPHIC TROPHY	Best exhibit in Section 8 - Photography: Senior Mounted Collection	Lois Brenchley
THE DIGITAL TROPHY	Best digital exhibit in Section 8 - Photography	Jane Williamson
THE BAILEY TROPHY	Most points in Section 8 - Photography: Junior classes except Mounted Collection	Gijs Van Oostrom
THE BARATTINI CUP	Best exhibit in Section 8 - Photography: Junior classes except Mounted Collection	Gijs Van Oostrom
THE FISHER CUP	Best exhibit in Section 8 - Photography: Junior Mounted Collection)	Saskia Da Silva Williams
THE LYNCH CHAPEL CUP	Best print in show	Natasja Van Der Woode
TROPHY	Most points in Section 9 - Children's: under 5	Harry Whittle / Rupert Knowles
THE MORGAN CUP	Best exhibit in Section 9 - Children's: under 5	Harry Whittle
TROPHY	Most points in Section 9 - Children's: 5 - 6 yrs	Olivia Isgrove
THE ASTON CUP	Best exhibit in Section 9 - Children's: 5 - 6 yrs	Will Halls
TROPHY	Most points in Section 9 - Children's: 7 - 8 yrs	Gijs Van Oostrom / Felix Ormond
THE PHYLLIS CRAM CUP	Best exhibit in Section 9 - Children's: 7 - 8 yrs	Harrison Hunt
TROPHY	Most points in Section 9 - Children's: 9 - 11 yrs	Ashleigh Cutts
THE WILF WEEKS SALVER	Best exhibit in Section 9 - Children's: 9 - 11 yrs	Poppy Campbell
THE SEARLE TROPHY	Best exhibit in Section 9 - Creative writing	Sophie Taylor
CERTIFICATE and WINE	Best exhibit in Section 9 - Grown-up kids	Phillippa Ormond
THE 'GREEN' TROPHY	Best exhibit in Section 10 - Green: 7-8 yrs 9-11 yrs 12-16 yrs Adult	Aimee Green Ashleigh Cutts Rose Ormond Jackie Warren
THE BOREHAM CUP	Best exhibit in Section Eleven	Keith Symons
THE TREASURE TROPHY	Best Wine in Show	Keith Symons
THE CURETON CUP	Most junior points in Show	Gijs Van Oostrom
THE JIMMY CALVETE MEMORIAL TROPHY	Awarded to the family who gains the highest average number of points without winning a major trophy	Prashad family
THE LYNCH GOLDEN JUBILEE STREET PARTY TROPHY	The family with the highest average number of points per person	Van Oostrom/Van Der Woode family
THE COMMUNITY ASSOC. ROSEBOWL	Most points in the Show	Bill Maggs
WINSCOMBE & SANDFORD PARISH COUNCIL SALVER	Awarded for the most Senior points in show excluding sections 4, 5 and 6	Jackie Warren



Michaelmas Fair Team

Show Organiser	Raechel Bentley	07811 144967
Fete Organiser	Shirley Davies	01934 843082
Donations Co-ordinator	Jill Cureton	01934 843776
Minutes Secretary	Jo Risk	01934 844235
Treasurer	Mandy Turner	01934 842354
Entry Secretaries	Mike Thresher	01934 843030
	Jean Harbour	01934 842871
Creative Arts	Sarah Evans	01934 249349
Cakes and Preserves	Pat Rushin	01934 844664
Flowers, Fruit, Veg and Floral Art	Mike Thresher	01934 843030
Honey	David Capon	01275 818167
Photography	Alison Blaxter	01934 843195
Green	Irene Thresher	01934 843030
Children	Adele Parsons	01934 844556
	Jo Campbell	01934 842312
Trophies	Carol Cooper	01934 842954
Fête	Shirley Davies	01934 843082
Trade Stalls	Jackie Warren	07811 292909
Programme	Richard Cureton	01934 843776
	Vicky Heath	01934 844480
Advertisements	Irene Thresher	01934 843030
Publicity	Denise Davis	07879 852519
Draw	Rita Hinton	01934 843184
	John Hudson	01934 842105
Spot the Oddity	Alison Methvin	01934 733526
Catering	Tim Sinnett	07548 622223
Craft & Fancy Goods	Sue Kent	01934 843972
Country Produce	Lesley Matthews	01934 843378

AND MANY OTHER VOLUNTEER HELPERS